

10 February 2010

## PRESS RELEASE

### EURO AREA SECURITIES ISSUES STATISTICS: DECEMBER 2009

*The annual growth rate of the outstanding amount of debt securities issued by euro area residents decreased from 9.7% in November 2009 to 8.1% in December. For the outstanding amount of quoted shares issued by euro area residents, the annual growth rate increased from 2.7% in November 2009 to 2.9% in December.*

New issuance of debt securities by euro area residents totalled EUR 951 billion in December 2009 (see Table I and Chart 1). As redemptions came to EUR 998 billion, net redemptions amounted to EUR 47 billion (see Table I). The annual growth rate of outstanding debt securities issued by euro area residents decreased from 9.7% in November 2009 to 8.1% in December (see Table I and Chart 3).

As regards the sectoral breakdown, the annual growth rate of outstanding debt securities issued by non-financial corporations decreased from 15.9% in November 2009 to 13.6% in December (see Table 2 and Chart 4). For the monetary financial institutions (MFIs) sector, this growth rate decreased from 2.5% in November 2009 to 2.2% in December. The annual growth rate of outstanding debt securities issued by financial corporations other than MFIs decreased from 21.5% in November 2009 to 13.6% in December, in part due to a base effect as issuance in December 2008 was very high. For the general government, this growth rate decreased from 12.0% in November 2009 to 11.3% in December.

As regards the maturity breakdown, the annual growth rate of outstanding short-term debt securities decreased from 1.2% in November 2009 to 0.4% in December (see Table I and Chart 3). The annual growth rate of outstanding short-term debt securities issued by MFIs increased from -11.7% to -7.8% during the same period (see Table 2). For long-term debt securities, the annual growth rate decreased from 10.8% in November 2009 to 9.2% in December. The annual growth rate of outstanding long-term debt securities issued by MFIs decreased from 5.0% to 4.0% during the same period. The annual growth rate of outstanding fixed rate long-term debt securities decreased from 12.5% in November 2009 to 12.1% in December. The annual growth rate of outstanding variable rate long-term debt securities decreased from 7.1% in November 2009 to 2.8% in December.

Concerning the currency breakdown, the annual growth rate of outstanding euro-denominated debt securities decreased from 10.2% in November 2009 to 8.3% in December. For debt securities in other currencies, this growth rate increased from 5.3% in November 2009 to 6.7% in December (see Table I).

The seasonally adjusted three-month annualised growth rate of outstanding debt securities issued by euro area residents decreased from 5.5% in November 2009 to 2.2% in December (see Table 3 and Chart 5).

New issuance of quoted shares by euro area residents totalled EUR 16.6 billion in December 2009 (see Table 4). As redemptions came to EUR 0.2 billion, net issues amounted to EUR 16.4 billion. The annual growth rate of the outstanding amount of quoted shares issued by euro area residents (excluding valuation changes) increased from 2.7% in November 2009 to 2.9% in December (see Table 4 and Chart 6). The annual growth rate of quoted shares issued by non-financial corporations was 1.9% in December 2009, the same as in November. For monetary financial institutions, it increased from 8.8% in November 2009 to 9.1% in December. For financial corporations other than MFIs, this growth rate increased from 1.7% in November 2009 to 4.6% in December.

The outstanding amount of quoted shares issued by euro area residents totalled EUR 4,297 billion at the end of December 2009. Compared with EUR 3,483 billion at the end of December 2008, this represents an annual increase of 23.4% in the value of the stock of quoted shares in December 2009, up from 16.7% in November.

*Unless otherwise indicated, data relate to non-seasonally adjusted statistics. In addition to the developments for December 2009, this press release incorporates minor revisions to the data for previous periods. A complete set of updated securities issues statistics is available on the "Money, banking and financial markets" pages of the "Statistics" section of the ECB's website (<http://www.ecb.europa.eu/stats/money/securities/html/index.en.html>). These data, as well as euro area data in accordance with the composition of the euro area at the time of the reference period, can be downloaded using the ECB's Statistical Data Warehouse (SDW).*

*Data for the period up to December 2009 will also be published in the March 2010 issues of the ECB's Monthly Bulletin and Statistics Pocket Book. The next press release on euro area securities issues will be published on 10 March 2010.*

**European Central Bank**

Directorate Communications, Press and Information Division

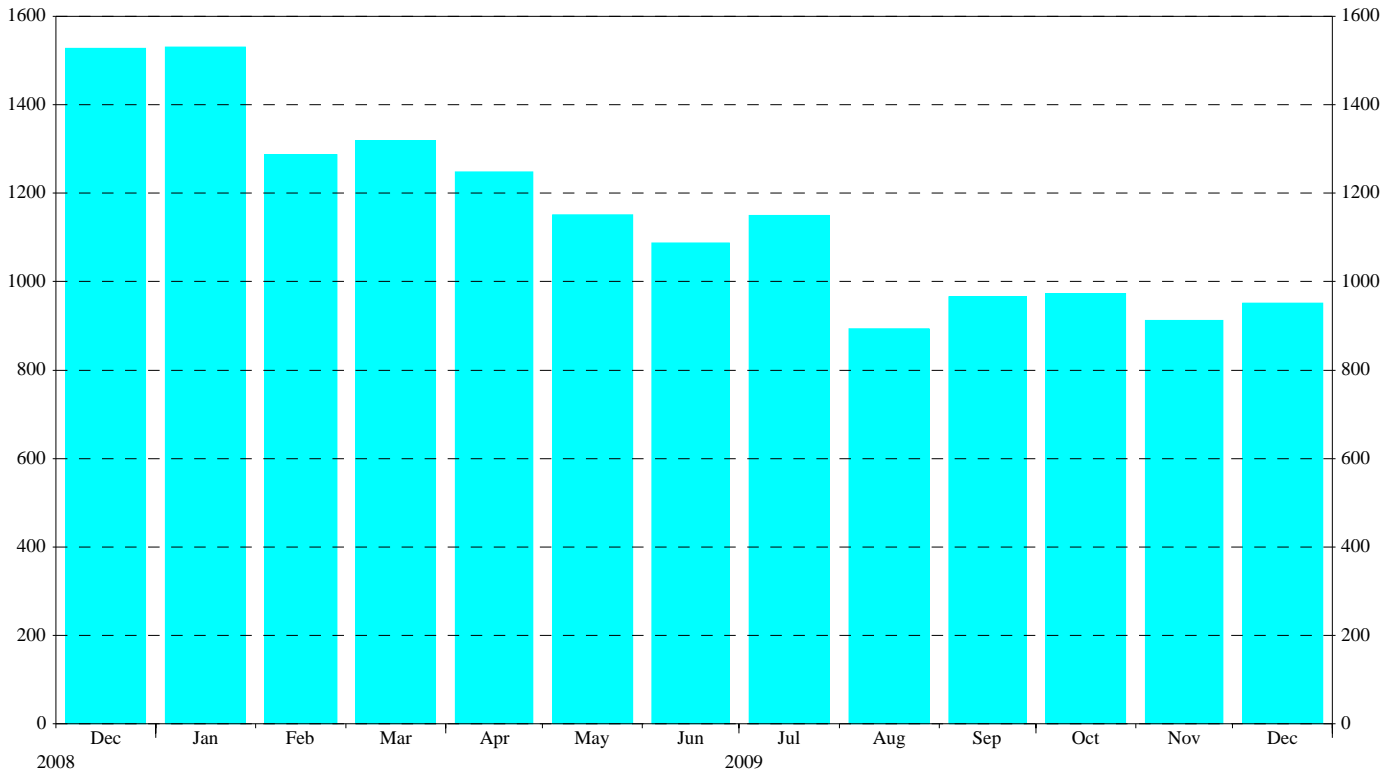
Kaiserstrasse 29, D-60311 Frankfurt am Main

Tel.: +49 69 1344 7455, Fax: +49 69 1344 7404

Internet: <http://www.ecb.europa.eu>

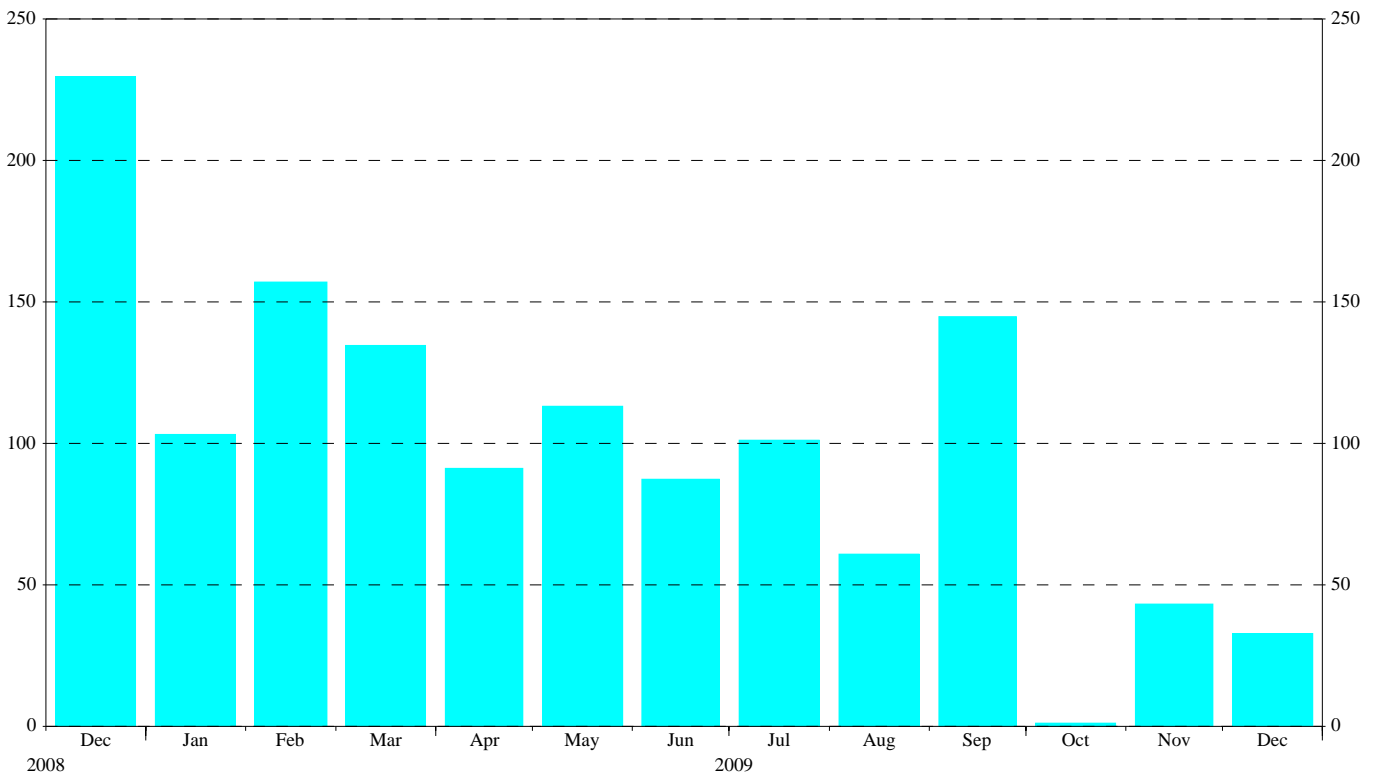
**Reproduction is permitted provided that the source is acknowledged.**

**Chart 1: Total gross issuance of debt securities by euro area residents**  
*(EUR billions; transactions during the month; nominal values)*



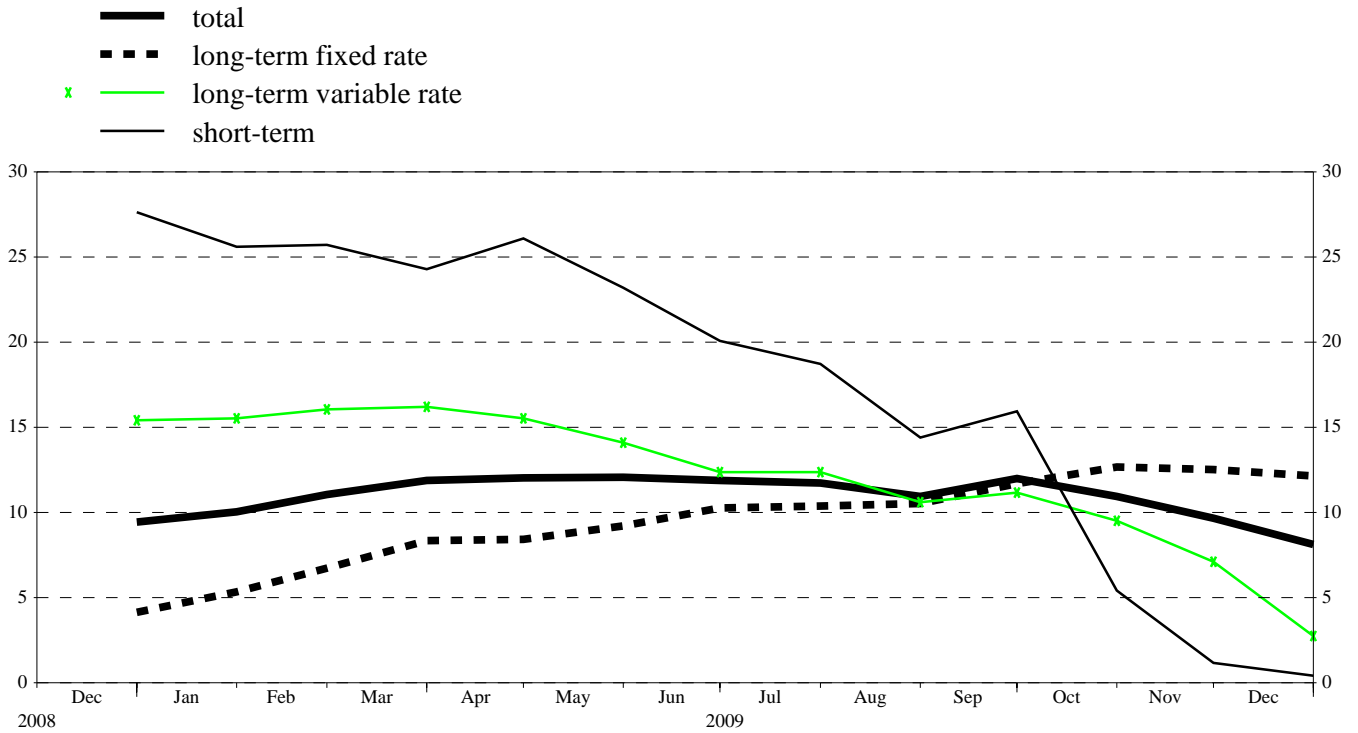
Source: ECB securities issues statistics.

**Chart 2: Total net issuance of debt securities by euro area residents**  
*(EUR billions; transactions during the month; nominal values; seasonally adjusted)*



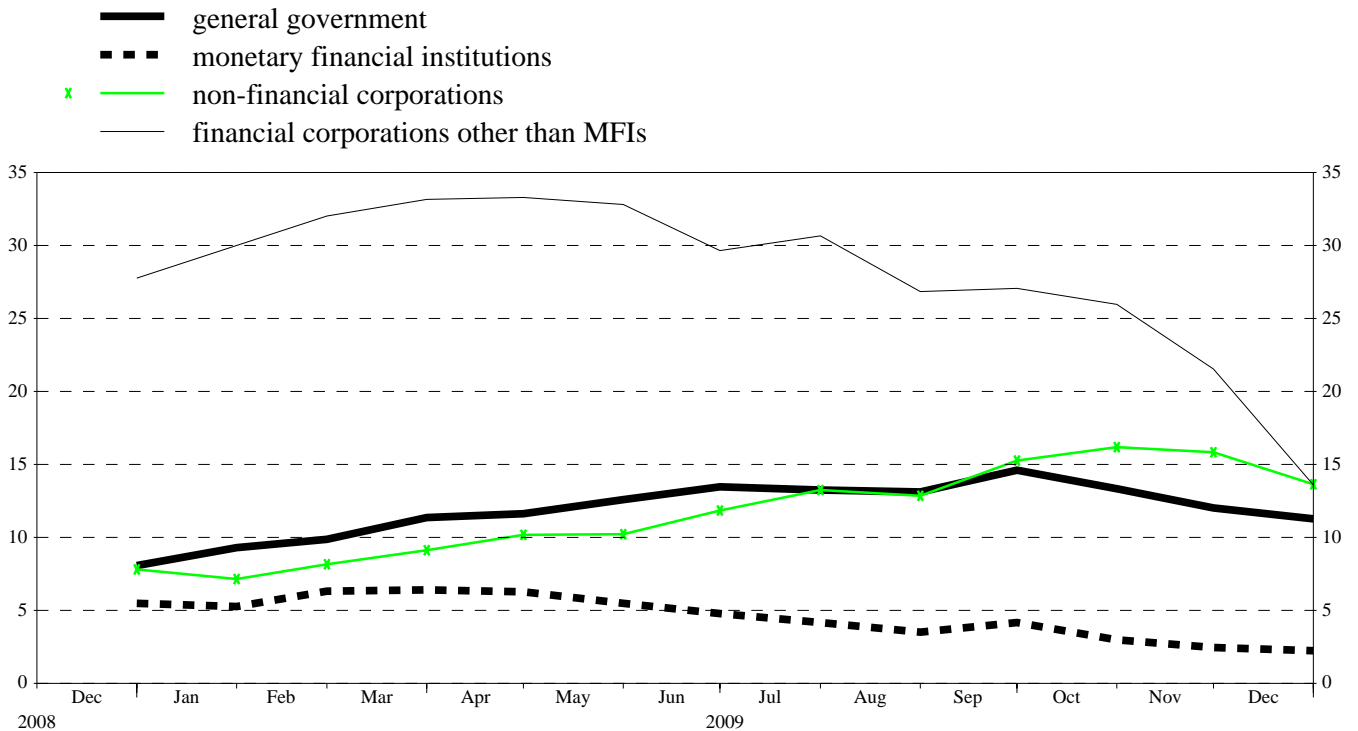
Source: ECB securities issues statistics.

**Chart 3: Annual growth rates of debt securities issued by euro area residents, by original maturity**  
(percentage changes)



Source: ECB securities issues statistics.

**Chart 4: Annual growth rates of debt securities issued by euro area residents, by sector**  
(percentage changes)



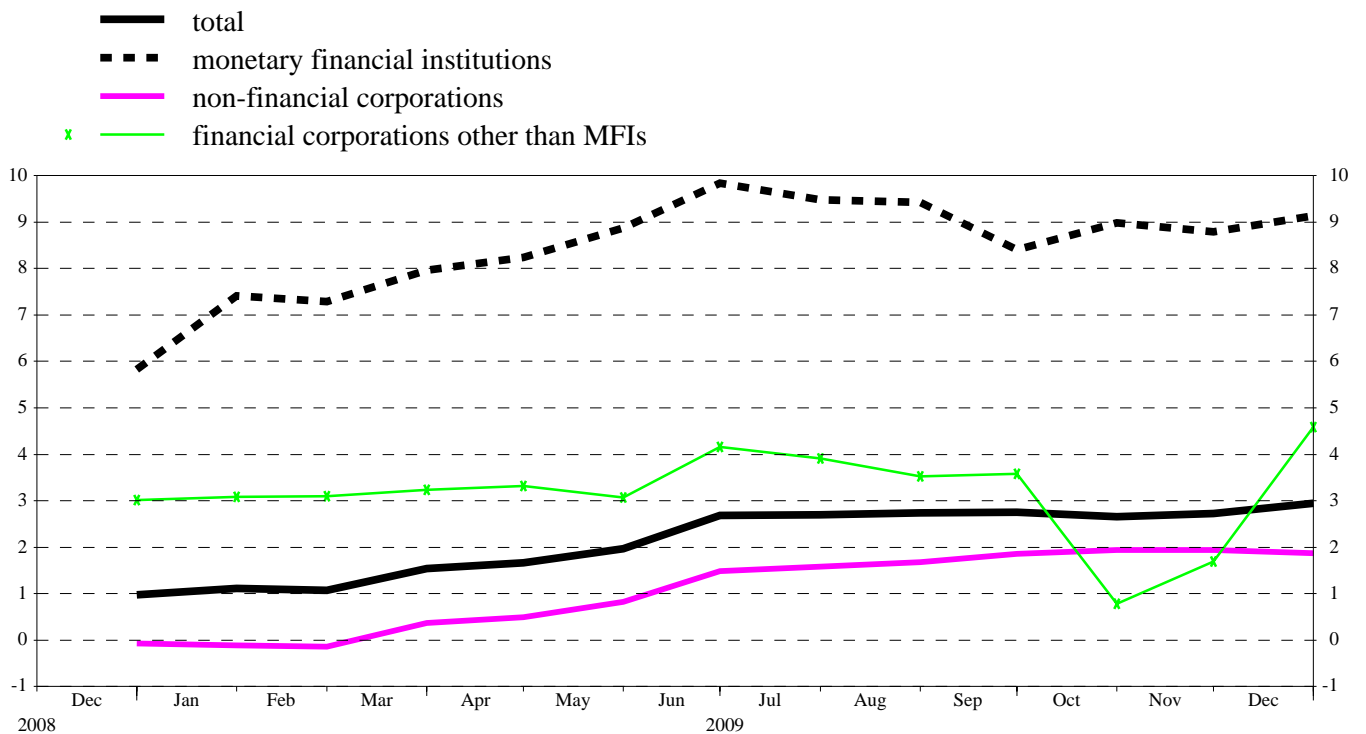
Source: ECB securities issues statistics.

**Chart 5: Growth rates of debt securities issued by euro area residents, seasonally adjusted**  
(percentage changes)



Source: ECB securities issues statistics.

**Chart 6: Annual growth rates of quoted shares issued by euro area residents, by sector**  
(percentage changes)



Source: ECB securities issues statistics.

**Table 1****Debt securities issued by euro area residents,<sup>1)</sup> by currency and original maturity<sup>2)</sup>***(EUR billions; nominal values)*

	Amounts outstanding	Net issues	Gross issues	Redemptions	Net issues	Amounts outstanding	Gross issues	Redemptions	Net issues	Amounts outstanding	Gross issues	Redemptions	Net issues	Annual growth rates of outstanding amounts <sup>5)</sup>											
	Dec. 2008		Jan. 2009 - Dec. 2009 <sup>3)</sup>			Nov. 2009				Dec. 2009				2008	2009	2009 Q1	2009 Q2	2009 Q3	2009 Q4	2009 July	2009 Aug.	2009 Sep.	2009 Oct.	2009 Nov.	2009 Dec.
Total	13,175.3	143.5	1,122.1	1,032.8	89.3	14,247.2	911.9	844.8	67.1	14,227.0	951.1	997.6	-46.6	7.5	11.1	10.6	12.0	11.5	10.2	11.7	11.0	12.0	10.9	9.7	8.1
of which in euro	11,921.8	156.7	1,044.1	961.8	82.3	12,963.5	846.1	787.9	58.2	12,914.8	876.0	926.3	-50.3	7.9	12.0	11.5	13.0	12.6	10.9	12.8	12.0	13.1	11.8	10.2	8.3
in other currencies	1,253.4	-13.2	78.0	71.0	7.0	1,283.8	65.8	56.9	8.9	1,312.2	75.0	71.3	3.7	4.3	3.5	3.0	3.9	2.5	4.5	2.7	1.8	2.8	3.4	5.3	6.7
Short-term	1,590.6	-10.7	873.2	872.5	0.7	1,584.7	718.0	736.3	-18.3	1,568.9	797.5	820.2	-22.6	22.4	17.3	25.7	23.8	17.0	4.7	18.7	14.4	15.9	5.4	1.2	0.4
of which in euro	1,421.3	-16.5	816.6	818.1	-1.6	1,404.1	667.3	691.4	-24.1	1,375.7	735.2	765.1	-29.8	24.5	16.9	25.4	22.8	17.8	3.9	19.3	15.6	17.1	5.1	-0.4	-1.4
in other currencies	169.3	5.9	56.6	54.3	2.3	180.6	50.7	44.9	5.8	193.2	62.3	55.1	7.2	10.2	20.2	28.3	31.2	11.8	11.6	15.4	5.9	7.9	8.2	14.9	15.6
Long-term <sup>3)</sup>	11,584.7	154.2	248.9	160.3	88.6	12,662.5	193.9	108.5	85.4	12,658.1	153.5	177.5	-23.9	5.8	10.3	8.7	10.5	10.8	10.9	10.8	10.5	11.5	11.7	10.8	9.2
of which in euro	10,500.5	173.2	227.5	143.7	83.9	11,559.4	178.8	96.5	82.3	11,539.1	140.8	161.3	-20.4	6.1	11.3	9.8	11.7	12.0	11.8	12.0	11.6	12.5	12.7	11.6	9.6
in other currencies	1,084.2	-19.1	21.3	16.6	4.7	1,103.1	15.1	12.0	3.1	1,119.0	12.7	16.2	-3.5	3.2	0.8	-0.8	-0.3	0.9	3.3	0.7	1.0	2.0	2.6	3.8	5.2
of which fixed rate in euro	7,614.7	37.7	172.0	94.9	77.1	8,507.7	141.5	67.2	74.3	8,533.5	81.7	69.5	12.2	3.1	9.6	6.1	9.0	10.6	12.4	10.4	10.5	11.7	12.7	12.5	12.1
in other currencies	6,903.6	53.1	156.5	85.6	70.9	7,741.3	131.1	60.8	70.3	7,754.8	73.2	58.9	14.2	2.9	10.1	6.5	9.6	11.3	12.9	11.0	11.2	12.3	13.3	13.0	12.3
of which variable rate in euro	3,477.4	129.4	60.5	52.5	8.1	3,608.9	42.0	34.2	7.8	3,600.6	64.2	77.6	-13.4	12.8	12.4	15.8	14.6	11.6	7.8	12.4	10.6	11.2	9.5	7.1	2.8
in other currencies	3,181.5	133.3	56.0	46.4	9.6	3,338.8	38.7	29.9	8.7	3,327.5	60.9	73.2	-12.3	14.3	14.7	18.7	17.3	13.8	9.4	14.8	12.6	13.3	11.4	8.5	3.6
	294.5	-3.8	4.6	6.1	-1.5	269.0	3.4	4.3	-1.0	272.0	3.4	4.5	-1.1	0.5	-8.5	-8.5	-9.2	-8.9	-7.3	-9.3	-8.0	-8.5	-7.7	-6.9	-6.2

Source: ECB securities issues statistics.

1) Data coverage for euro area residents is estimated to be around 95% of total issuance.

2) "Short-term" means securities with an original maturity of one year or less (in exceptional cases two years or less). Securities with a longer original maturity, or with optional maturity dates, the latest of which is more than one year away, or with indefinite maturity dates, are classified as long-term.

3) The residual difference between total long-term debt securities and fixed and variable rate long-term debt securities consists of zero coupon bonds and revaluation effects.

4) Monthly averages of the transactions during this period.

5) Annual growth rates are based on financial transactions that occur when an institutional unit incurs or redeems liabilities. The annual growth rates therefore exclude the impact of reclassifications, revaluations, exchange rate variations and any other changes which do not arise from transactions.

**Table 2**
**Debt securities issued by euro area residents in all currencies,<sup>1)</sup> by issuing sector<sup>2)</sup> and maturity<sup>3)</sup>**
*(EUR billions; nominal values)*

	Amounts outstanding	Net issues	Gross issues	Redemptions	Net issues	Amounts outstanding	Gross issues	Redemptions	Net issues	Amounts outstanding	Gross issues	Redemptions	Net issues	Annual growth rates of outstanding amounts <sup>5)</sup>											
	Dec. 2008		Jan. 2009 - Dec. 2009 <sup>4)</sup>			Nov. 2009				Dec. 2009				2008	2009	2009 Q1	2009 Q2	2009 Q3	2009 Q4	2009 July	2009 Aug.	2009 Sep.	2009 Oct.	2009 Nov.	2009 Dec.
Total	13,175.3	143.5	1,122.1	1,032.8	89.3	14,247.2	911.9	844.8	67.1	14,227.0	951.1	997.6	-46.6	7.5	11.1	10.6	12.0	11.5	10.2	11.7	11.0	12.0	10.9	9.7	8.1
MFIs	5,272.5	-15.0	738.2	728.3	9.9	5,389.0	589.8	581.0	8.8	5,376.1	699.6	727.8	-28.3	7.7	4.6	5.9	5.8	4.1	2.9	4.2	3.5	4.2	3.0	2.5	2.2
Short-term	821.7	-11.5	639.4	644.4	-5.0	706.1	515.2	519.2	-4.1	732.7	627.4	606.5	20.9	24.6	2.6	11.5	8.4	-0.4	-8.3	1.7	-4.2	-1.7	-8.4	-11.7	-7.8
Long-term	4,450.8	-3.6	98.8	83.9	14.9	4,682.8	74.6	61.7	12.9	4,643.4	72.2	121.4	-49.2	5.0	4.9	4.8	5.3	4.8	4.8	4.6	4.9	5.1	4.9	5.0	4.0
of which																									
Fixed rate	2,326.9	-9.5	59.6	40.9	18.7	2,549.8	46.9	31.7	15.2	2,549.3	33.0	38.8	-5.8	4.9	7.0	4.9	6.8	7.2	9.0	6.7	7.4	8.2	8.5	9.4	9.6
Variable rate	1,725.3	6.8	27.3	33.4	-6.0	1,708.3	20.9	23.4	-2.5	1,678.4	32.3	65.9	-33.6	5.6	2.0	5.3	3.3	1.0	-1.6	1.5	1.0	0.2	-1.1	-1.8	-4.1
Non-MFI corporations	2,625.1	155.7	141.0	111.2	29.8	2,955.0	105.4	89.6	15.8	2,981.2	114.1	95.0	19.1	17.6	23.5	23.9	25.8	24.1	20.5	25.6	22.8	23.7	23.2	19.9	13.6
of which																									
Financial corporations other than MFIs	1,924.5	143.8	56.4	34.5	21.8	2,159.4	36.6	23.9	12.7	2,184.6	45.8	24.9	20.9	23.0	28.4	30.8	32.5	28.6	22.4	30.7	26.9	27.1	26.0	21.5	13.6
Short-term	62.1	0.5	13.1	15.5	-2.5	34.5	8.9	9.9	-1.0	32.5	7.9	9.9	-2.0	91.7	-29.4	-0.5	-16.4	-43.3	-46.0	-40.8	-47.9	-50.6	-44.9	-43.9	-47.7
Long-term	1,862.4	143.3	43.3	19.0	24.3	2,124.9	27.7	14.0	13.7	2,152.1	38.0	15.0	23.0	21.5	30.4	31.8	34.1	31.3	24.9	33.3	29.8	30.1	28.8	23.9	15.6
of which																									
Fixed rate	635.2	14.0	18.2	5.9	12.4	774.3	13.4	5.7	7.7	780.3	7.4	4.6	2.7	5.7	20.8	12.9	20.3	24.6	25.2	25.8	24.6	24.5	26.0	25.6	23.3
Variable rate	1,198.1	127.8	24.3	12.0	12.3	1,324.7	13.5	7.9	5.6	1,347.1	30.0	8.5	21.6	33.4	37.1	44.8	44.0	36.5	25.7	39.2	34.0	34.5	31.5	23.7	12.3
Non-financial corporations	700.6	11.9	84.7	76.7	8.0	795.6	68.8	65.7	3.0	796.6	68.2	70.1	-1.9	6.4	11.8	7.9	10.3	13.2	15.5	13.3	12.9	15.3	16.2	15.9	13.6
Short-term	115.7	0.2	68.4	72.2	-3.8	74.1	57.9	63.2	-5.3	70.2	59.2	63.2	-4.0	15.0	-19.5	-0.3	-17.3	-26.1	-32.9	-26.2	-26.7	-26.1	-29.8	-35.8	-39.4
Long-term	584.9	11.7	16.3	4.5	11.8	721.5	10.8	2.5	8.3	726.4	9.0	6.9	2.1	4.8	17.9	9.5	15.8	21.1	25.1	21.3	20.8	23.3	25.3	26.3	24.1
of which																									
Fixed rate	448.0	11.2	15.5	3.3	12.3	589.3	10.7	1.2	9.4	595.3	7.8	4.3	3.5	4.9	24.2	12.5	21.2	28.4	34.0	28.6	28.2	31.8	34.3	35.3	32.8
Variable rate	126.7	-0.8	0.7	1.2	-0.5	121.8	0.1	1.3	-1.1	120.6	1.1	2.6	-1.5	7.1	-2.0	0.8	-1.1	-3.2	-4.4	-3.0	-3.7	-4.7	-4.3	-4.2	-4.8
General government	5,277.7	2.8	242.8	193.3	49.6	5,903.2	216.7	174.2	42.5	5,869.7	137.5	174.8	-37.4	3.2	12.1	9.6	12.2	13.5	12.8	13.3	13.1	14.6	13.4	12.0	11.3
of which																									
Central government	4,937.4	-6.1	221.1	174.3	46.8	5,537.1	196.8	157.1	39.7	5,496.4	119.1	163.5	-44.4	3.3	12.3	9.9	12.4	13.8	12.9	13.5	13.4	14.9	13.6	12.1	11.4
Short-term	566.4	-7.1	137.0	124.8	12.3	751.4	120.9	129.0	-8.0	712.7	91.2	130.9	-39.7	15.5	58.3	65.0	69.2	68.3	37.3	70.3	68.1	65.1	37.9	31.4	26.0
Long-term	4,371.0	1.0	84.1	49.5	34.5	4,785.7	75.9	28.1	47.8	4,783.6	27.9	32.6	-4.8	2.1	7.5	4.9	6.9	8.2	9.9	7.8	7.8	9.6	10.4	9.6	9.5
of which																									
Fixed rate	3,954.7	19.9	74.3	42.3	32.1	4,328.9	68.0	27.5	40.6	4,337.9	27.3	20.7	6.6	1.5	8.0	5.3	7.5	9.0	10.3	8.6	8.7	10.0	11.1	10.1	9.7
Variable rate	363.0	-4.6	6.1	5.2	0.9	373.2	5.1	0.6	4.4	373.9	0.6	0.2	0.4	7.6	0.1	0.8	-0.6	-1.6	2.0	-2.3	-3.8	2.9	1.3	1.7	3.0
Other general government	340.2	8.9	21.7	19.0	2.8	366.1	19.9	17.1	2.8	373.3	18.4	11.3	7.1	2.5	8.9	6.0	9.6	9.5	10.4	9.4	9.0	10.6	10.4	10.6	9.7
Short-term	24.7	7.2	15.3	15.6	-0.3	18.6	15.1	15.0	0.1	20.7	11.9	9.7	2.1	17.3	37.0	62.1	54.3	41.7	6.4	47.0	35.4	42.1	9.2	6.3	-16.0
Long-term	315.5	1.7	6.4	3.4	3.1	347.5	4.9	2.2	2.7	352.6	6.5	1.6	4.9	1.9	7.7	3.8	8.1	8.3	10.6	8.0	8.0	9.3	10.4	10.8	11.8
of which																									
Fixed rate	249.9	2.1	4.3	2.6	1.7	265.3	2.5	1.1	1.4	270.6	6.2	1.0	5.2	1.4	4.2	1.6	4.8	3.9	6.6	3.9	3.5	4.4	6.4	7.1	8.3
Variable rate	64.4	0.1	2.1	0.7	1.4	80.9	2.4	1.0	1.3	80.6	0.3	0.6	-0.3	3.2	20.7	11.1	19.9	25.1	26.2	23.7	25.9	28.2	26.1	25.8	25.2

*Source: ECB securities issues statistics.*
*1) Data coverage for euro area residents is estimated to be around 95% of total issuance.*
*2) Corresponding ESA 95 sector codes: MFIs (including Eurosystem) comprises the ECB and the national central banks of the euro area (S.121) and other monetary financial institutions (S.122); financial corporations other than MFIs comprises other financial intermediaries (S.123), financial auxiliaries (S.124) and insurance corporations and pension funds (S.125); non-financial corporations (S.11); central government (S.1311); other general government comprises state government (S.1312), local government (S.1313) and social security funds (S.1314).*
*3) The residual difference between total long-term debt securities and fixed and variable rate long-term debt securities consists of zero coupon bonds and revaluation effects.*
*4) Monthly averages of the transactions during this period.*
*5) Annual growth rates are based on financial transactions that occur when an institutional unit incurs or redeems liabilities. The annual growth rates therefore exclude the impact of reclassifications, revaluations, exchange rate variations and any other changes which do not arise from transactions.*

**Table 3**
**Debt securities issued by euro area residents in all currencies,<sup>1)</sup> by issuing sector<sup>2)</sup> and maturity, seasonally adjusted**
*(EUR billions; nominal values)*

	Amounts outstanding	Net issues					Three-month annualised growth rates of outstanding amounts <sup>3)</sup>												
		Dec. 2009	Dec. 2008	Sep. 2009	Oct. 2009	Nov. 2009	Dec. 2009	2009 Jan.	2009 Feb.	2009 Mar.	2009 Apr.	2009 May	2009 June	2009 July	2009 Aug.	2009 Sep.	2009 Oct.	2009 Nov.	2009 Dec.
Total	14,318.3	229.7	144.9	1.1	43.2	32.9	17.3	15.8	12.4	11.9	10.4	8.8	9.1	7.4	9.1	6.0	5.5	2.2	
Short-term	1,643.9	63.8	24.7	-54.1	-8.5	53.1	30.1	19.2	0.9	9.1	3.9	1.9	1.6	-6.4	2.5	-14.3	-9.0	-2.3	
Long-term	12,674.4	165.9	120.2	55.2	51.7	-20.2	15.6	15.4	14.1	12.3	11.3	9.8	10.1	9.4	10.0	9.0	7.5	2.8	
MFIs	5,426.0	40.8	16.1	-73.0	11.5	23.5	7.0	7.3	4.7	5.0	4.3	4.8	4.6	2.0	2.2	-4.1	-3.3	-2.8	
Short-term	750.0	17.6	9.0	-64.1	-5.9	45.6	22.4	18.9	5.8	-0.4	-5.7	-6.1	-5.0	-24.2	-17.5	-39.2	-28.5	-12.2	
Long-term	4,676.0	23.2	7.1	-9.0	17.4	-22.1	4.4	5.3	4.4	5.9	6.2	6.9	6.3	7.3	6.0	3.2	1.3	-1.2	
Non-MFI corporations	2,942.8	114.7	52.8	-1.1	6.1	-35.6	43.8	40.4	25.2	24.5	19.7	15.8	18.4	14.0	18.8	8.8	8.2	-4.1	
of which																			
Financial corporations other than MFIs	2,138.9	90.8	30.8	-8.0	3.5	-42.2	54.7	48.3	31.7	29.4	23.2	16.9	19.0	14.0	17.6	5.7	5.0	-8.3	
Short-term	32.3	-1.2	-0.5	4.9	-0.8	-3.1	-86.2	-85.3	-80.9	16.9	23.4	-22.6	-52.2	-63.7	-55.1	19.0	52.3	12.7	
Long-term	2,106.6	92.0	31.4	-12.9	4.3	-39.1	66.1	58.0	38.7	29.7	23.1	17.8	21.1	16.3	19.5	5.5	4.4	-8.6	
Non-financial corporations	803.9	23.9	21.9	7.0	2.6	6.6	18.9	21.4	9.0	12.0	10.7	12.7	16.7	14.2	22.2	17.7	17.5	8.5	
Short-term	76.2	10.6	0.0	-4.2	-5.1	2.4	-9.9	-32.7	-63.1	-48.6	-53.5	-47.7	-35.8	-13.5	-1.3	-18.4	-37.8	-29.3	
Long-term	727.7	13.3	21.9	11.2	7.7	4.1	25.4	35.3	32.8	26.9	26.0	25.4	26.4	18.3	25.4	22.8	26.2	13.8	
General government	5,949.5	74.2	76.0	75.2	25.7	45.0	16.6	13.8	14.4	13.1	12.1	9.4	8.9	9.4	11.2	15.0	12.9	10.4	
of which																			
Central government	5,580.7	69.6	70.3	71.3	25.2	41.8	17.2	14.2	14.8	12.9	11.9	9.3	9.2	9.6	11.1	15.1	13.0	10.6	
Short-term	769.0	34.7	13.0	10.0	3.2	10.7	84.6	57.1	30.3	37.5	32.7	26.8	21.0	24.4	33.5	18.5	15.1	13.4	
Long-term	4,811.7	34.8	57.2	61.4	22.1	31.1	10.2	9.2	12.7	9.7	9.1	7.0	7.5	7.5	8.0	14.6	12.7	10.1	
Other general government	368.8	4.6	5.7	3.9	0.4	3.2	7.2	9.2	9.0	15.6	14.7	10.3	5.3	7.0	12.4	13.6	11.8	8.5	
Short-term	16.5	2.0	3.2	-0.6	0.2	-2.5	41.5	26.1	-25.1	-25.9	-55.5	-38.1	-5.0	22.1	97.6	41.4	87.9	-47.9	
Long-term	352.3	2.6	2.6	4.4	0.2	5.7	5.5	8.3	11.5	18.5	20.5	13.7	5.9	6.3	9.1	12.3	8.8	12.7	

*Source: ECB securities issues statistics.*
*1) Data coverage for euro area residents is estimated to be around 95% of total issuance.*
*2) Corresponding ESA 95 sector codes: MFIs (including Eurosystem) comprises the ECB and the national central banks of the euro area (S.121) and other monetary financial institutions (S.122); financial corporations other than MFIs comprises other financial intermediaries (S.123), financial auxiliaries (S.124) and insurance corporations and pension funds (S.125); non-financial corporations (S.11); central government (S.1311); other general government comprises state government (S.1312), local government (S.1313) and social security funds (S.1314).*
*3) Three-month annualised growth rates are based on financial transactions that occur when an institutional unit incurs or redeems liabilities. The three-month annualised growth rates therefore exclude the impact of reclassifications, revaluations, exchange rate variations and any other changes which do not arise from transactions. The rates are annualised to allow direct comparisons with annual rates (please note that the non-adjusted rates presented in Table 2 are almost identical to seasonally adjusted annual rates).*



**Table 4**
**Quoted shares issued by euro area residents, by issuing sector <sup>1)</sup>**
*(EUR billions; market values)*

	Amounts out-standing	Net issues	Gross issues	Redemptions	Net issues	Amounts out-standing	Gross issues	Redemptions	Net issues	Annual percentage change in market capitalisation <sup>3)</sup>	Amounts out-standing	Gross issues	Redemptions	Net issues	Annual percentage change in market capitalisation <sup>3)</sup>	Annual growth rates of outstanding amounts <sup>4)</sup>													
	Dec. 2008		Jan. 2009 - Dec. 2009 <sup>2)</sup>			Nov. 2009					Dec. 2009					2008	2009	2009 Q1	2009 Q2	2009 Q3	2009 Q4	2009 July	2009 Aug.	2009 Sep.	2009 Oct.	2009 Nov.	2009 Dec.		
	Total	3,482.6	6.8	9.5	0.7	8.7	4,072.5	11.6	0.2	11.3	16.7	4,297.0	16.6	0.2	16.4	23.4	0.9	2.1	1.1	1.9	2.7	2.7	2.7	2.7	2.7	2.7	2.8	2.7	2.7
MFIs	377.0	0.0	3.2	0.0	3.2	567.6	9.0	0.0	9.0	43.9	570.7	1.9	0.0	1.9	51.4	2.5	8.5	7.2	8.7	9.3	8.8	9.5	9.4	8.4	9.0	8.8	9.1		
Non-MFI corporations of which	3,105.5	6.7	6.2	0.7	5.5	3,504.8	2.6	0.2	2.4	13.2	3,726.3	14.7	0.2	14.5	20.0	0.7	1.3	0.3	1.0	1.9	2.0	1.8	1.9	2.1	1.8	1.9	2.1		
Financial corporations other than MFIs	269.1	1.2	1.4	0.2	1.1	313.5	1.0	0.0	1.0	18.2	341.0	10.5	0.1	10.4	26.8	2.6	3.1	3.1	3.4	3.8	2.2	3.9	3.5	3.6	0.8	1.7	4.6		
Non-financial corporations	2,836.5	5.5	4.9	0.5	4.4	3,191.3	1.6	0.2	1.3	12.8	3,385.2	4.3	0.1	4.1	19.3	0.4	1.1	0.0	0.7	1.6	1.9	1.6	1.7	1.9	1.9	1.9	1.9		

Source: ECB securities issues statistics.

1) Corresponding ESA 95 sector codes: MFIs refers to other monetary financial institutions (S.122); financial corporations other than MFIs comprises other financial intermediaries (S.123), financial auxiliaries (S.124) and insurance corporations and pension funds (S.125); non-financial corporations (S.11).

2) Monthly averages of the transactions during this period.

3) Percentage change between the amount outstanding at the end of the month and the amount outstanding 12 months earlier.

4) Annual growth rates are based on transactions that occur during the period and therefore exclude reclassifications and any other changes which do not arise from transactions.